

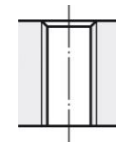
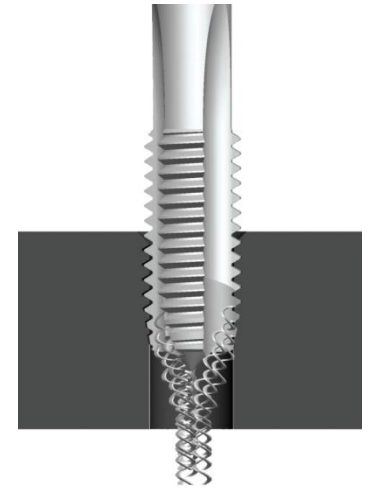
# NORIS STABIL HR HSSPS

## Katalog-Nr. 6533 / 7533

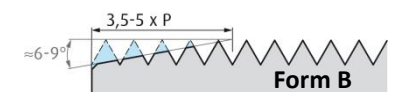


nitriert

Schaft h9



4xD



<b>A</b>	850 - 1400N/mm <sup>2</sup>	6-8 m/min	Emulsion / Öl
<b>N</b>	CuAl, CuZn	2-10 m/min	Emulsion / Öl
<b>S</b>	Ni-, Co-, Fe- Leg. ≤850N/mm <sup>2</sup>	3-5 m/min	Emulsion / Öl

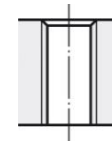
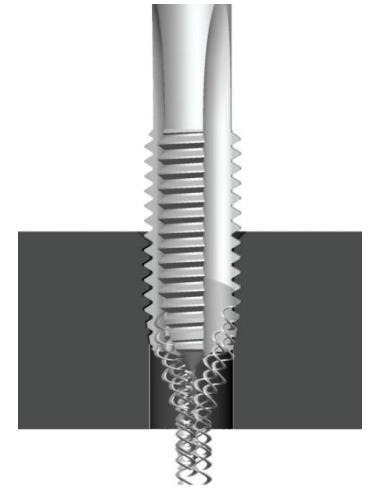
# NORIS STABIL HR HSSPS

## Katalog-Nr. 6533 / 7533

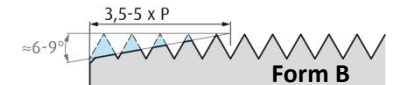


TIN Beschichtung

Schaft h9



4xD



<b>A</b>	850 - 1400N/mm <sup>2</sup>	6-10 m/min	Emulsion / Öl
<b>R</b>	≤1100N/mm <sup>2</sup>	6-10 m/min	Emulsion / Öl
<b>N</b>	CuAl, CuZn	4-12 m/min	Emulsion / Öl
<b>S</b>	Ni-, Co-, Fe- Leg. ≤850N/mm <sup>2</sup>	4-6 m/min	Emulsion / Öl