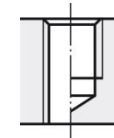
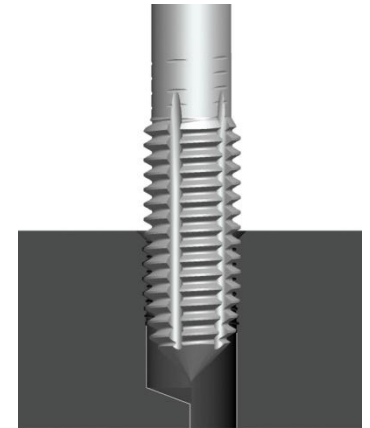


**NORIS SPANLOS EC HSSE**  
**Katalog-Nr. 6960**



HCr Beschichtung

Schaft h9



1,5xD



2-3 xP

Form C

<b>N</b>	<5% AlSi, langsp.CuZn, langsp.CuAl	12-20 m/min	Emulsion

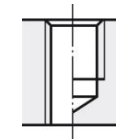
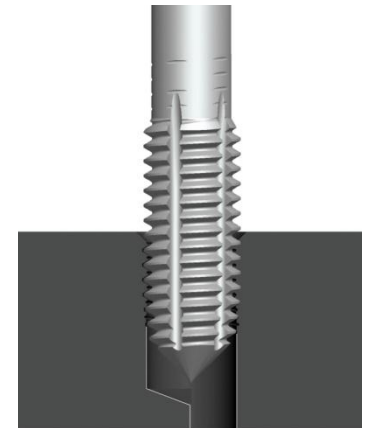
# NORIS SPANLOS EC HSSE

## Katalog-Nr. 6960 / 7960

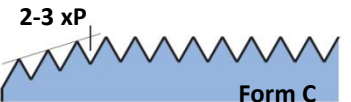


TIN Beschichtung

Schaft h9



1,5xD



2-3 xP

Form C

<b>A</b>	≤1100N/mm <sup>2</sup>	10-25 m/min	Emulsion / Öl
<b>R</b>	≤1100N/mm <sup>2</sup>	8-12 m/min	Emulsion / Öl
<b>F</b>	GJS, GTW, GTS	10-12 m/min	Emulsion
<b>N</b>	kurzsp. AlSi	15-30 m/min	Emulsion

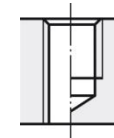
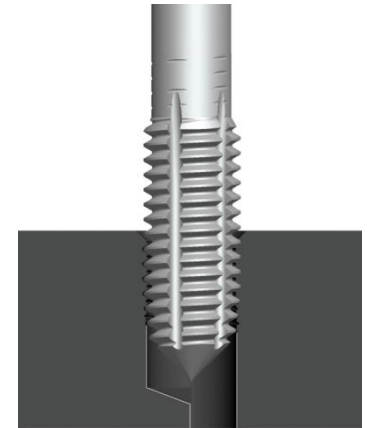
# NORIS SPANLOS EC HSSE

## Katalog-Nr. 6960



TiN-GS Beschichtung

Schaft h9



1,5xD



2-3 xP

Form C

<b>A</b>	$\leq 1100 \text{N/mm}^2$	10-25 m/min	Emulsion / Öl
<b>R</b>	$\leq 1100 \text{N/mm}^2$	10-15 m/min	Emulsion / Öl